

# UGA's Research Mission

Chris King, Interim Vice President for Research  
Jill Tincher, Executive Director, Sponsored Projects Administration  
Jake Maas, Director, Office for Proposal Enhancement

*August 9, 2024*



# Welcome!

***Interim  
Vice President  
for Research  
Chris King***

*College of Veterinary Medicine  
Department of Population  
Health*







UNIVERSITY OF  
**GEORGIA**

## 2025 STRATEGIC PLAN

*The 2025 Strategic Plan sets a course to reach new heights of excellence through three broad and mission-centered strategic directions.*

**1** Promoting excellence in teaching and learning

**2** Growing research, innovation, and entrepreneurship

**3** Strengthening partnerships with communities across Georgia and around the world



# Your Research, Scholarly and Creative Activities are Central to Achieving UGA's Strategic Goals

Your...

- Teaching of your students engaged in research, outreach and creative work,
- Impactful research and scholarship programs you develop, and
- The partnerships and trusted relationships you build

are all fundamental to achieving UGA's Strategic Plan and UGA's Research Goals





# UGA faculty earning external recognition

*Guggenheim Foundation*



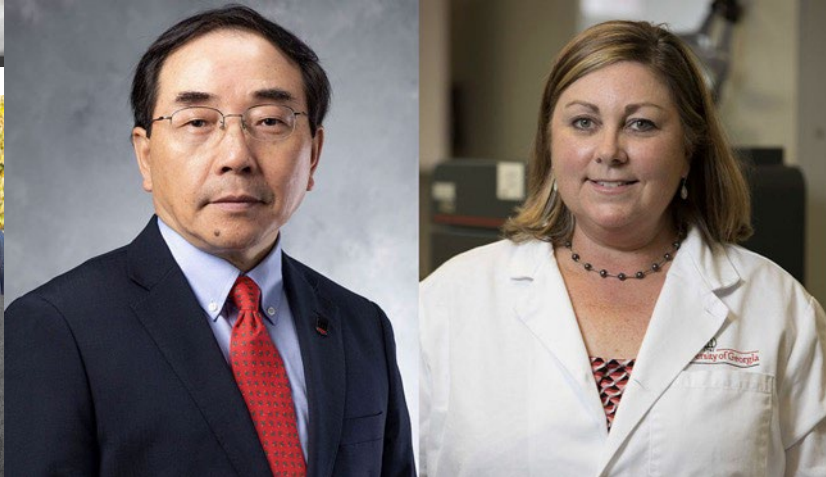
*National Academy of Sciences*



*MacArthur Foundation*

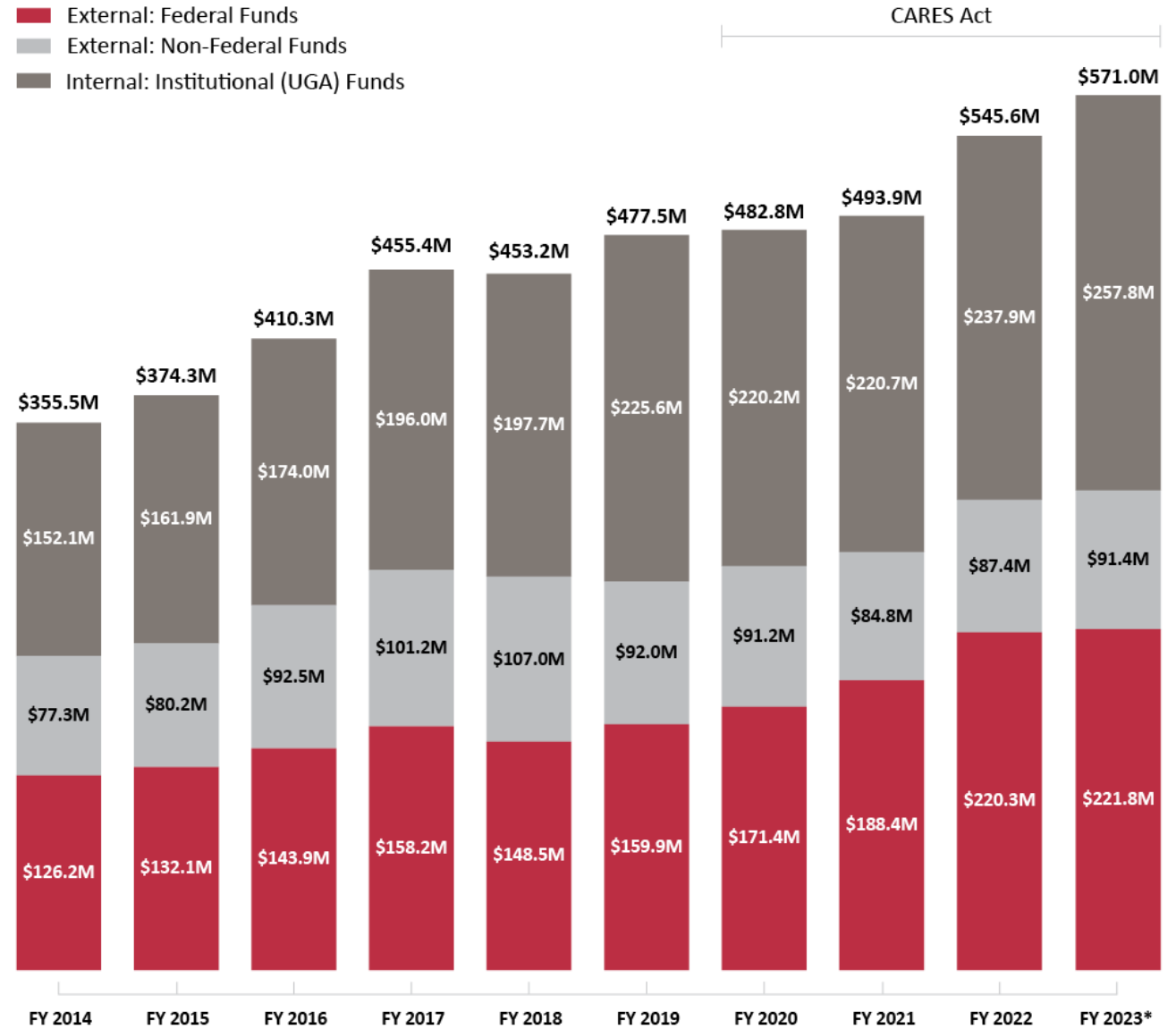


*National Academy of Inventors*



*American Academy of Arts & Sciences*

# FY 2023 NSF Higher Education Research & Development (HERD) Expenditures



# NSF HERD Rankings: FY 2022 R&D Expenditures

TABLE 21

Higher education R&D expenditures, ranked by FY 2022 R&D expenditures: FYs 2010–22

(Dollars in thousands)

Institution	Rank	2010	2011	2012	2013	2014	2015	2016	2017	2018	2019	2020	2021	2022
Rutgers, State U. New Jersey, New Brunswick	46	428,432	432,306	434,901	493,320	644,116	628,613	630,212	681,719	706,282	657,249	688,077	643,955	712,231
U. Utah	47	379,200	414,316	430,056	494,058	486,140	518,928	350,212	380,295	552,306	601,133	607,061	624,737	670,119
U. Virginia, Charlottesville	48	276,308	398,096	383,359	385,828	358,576	373,218	397,458	469,682	551,761	613,938	652,002	611,313	662,658
U. Cincinnati	49	411,269	448,936	433,668	438,642	422,873	436,028	430,579	455,250	480,095	529,796	530,138	551,826	615,070
U. Colorado Boulder	50	349,449	390,677	392,004	385,849	379,475	420,775	453,123	499,389	514,573	513,822	525,674	547,724	611,380
U. Colorado Anschutz Medical Campus <sup>c</sup>	51	na	na	na	na	na	na	na	na	na	na	na	562,855	611,358
U. Iowa	52	444,034	443,893	446,429	435,377	449,147	443,218	473,362	494,280	511,973	508,353	538,583	553,876	594,215
Virginia Polytechnic Institute and State U.	53	398,169	450,058	454,417	496,169	513,149	504,282	521,773	522,425	531,636	541,969	556,341	542,045	591,861
U. Chicago	54	437,721	453,562	419,631	402,621	390,082	412,536	420,997	433,328	423,993	459,171	458,891	497,651	591,805
North Carolina State U.	55	369,785	378,154	404,885	417,168	446,118	468,888	488,818	508,145	508,841	541,188	546,888	547,118	588,888
<b>UGA</b> U. Georgia	56	295,339	335,901	351,395	350,225	355,471	374,264	410,345	455,432	453,249	477,536	482,786	493,944	545,631
U. California, Irvine	57	327,394	344,678	350,030	347,773	340,038	329,798	343,319	361,414	426,810	448,967	490,397	523,752	534,947
Scripps Research Institute	58	387,298	400,768	398,673	399,899	386,231	384,161	364,670	354,582	396,839	427,734	444,964	485,435	492,639
Oregon Health and Science U.	59	314,990	334,324	305,530	308,767	314,802	326,915	331,524	348,449	372,180	415,629	446,890	452,812	479,226
California Institute of Technology	60	362,172	377,514	379,713	347,105	367,182	374,424	371,060	400,312	391,003	399,931	449,651	438,624	478,142



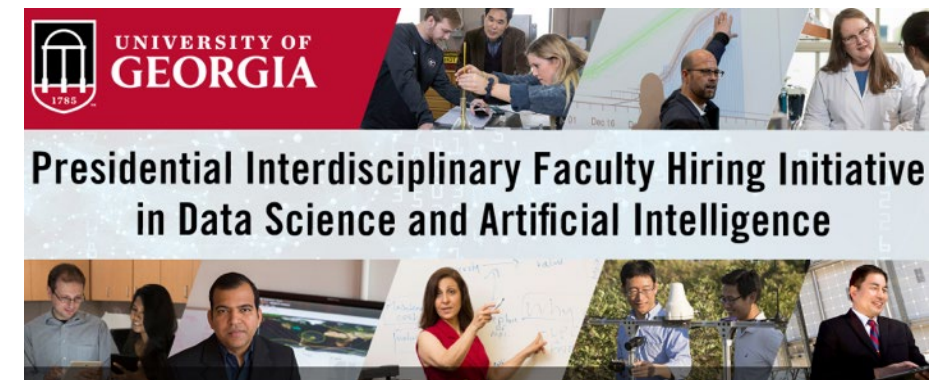
# Research Excellence

## Provost's Task Force on Academic Excellence

- Precision agriculture
- Environmental sciences
- Biomedical science (especially brain science)
- Social science
- Security—cybersecurity, national security, food security

## Cluster hire initiatives

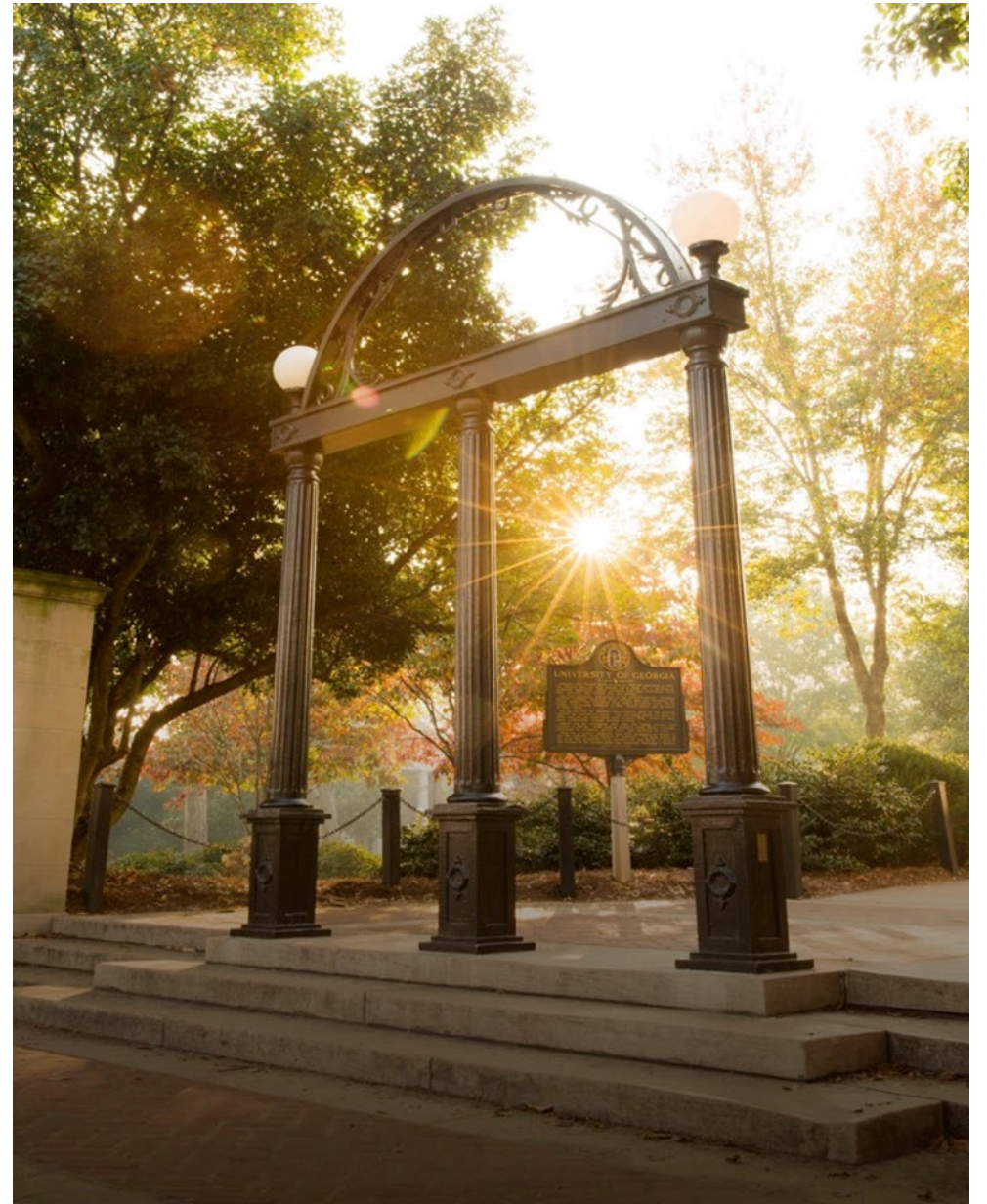
- Artificial intelligence, machine learning, & data science
- Integrated precision agriculture
- Brain & behavioral health





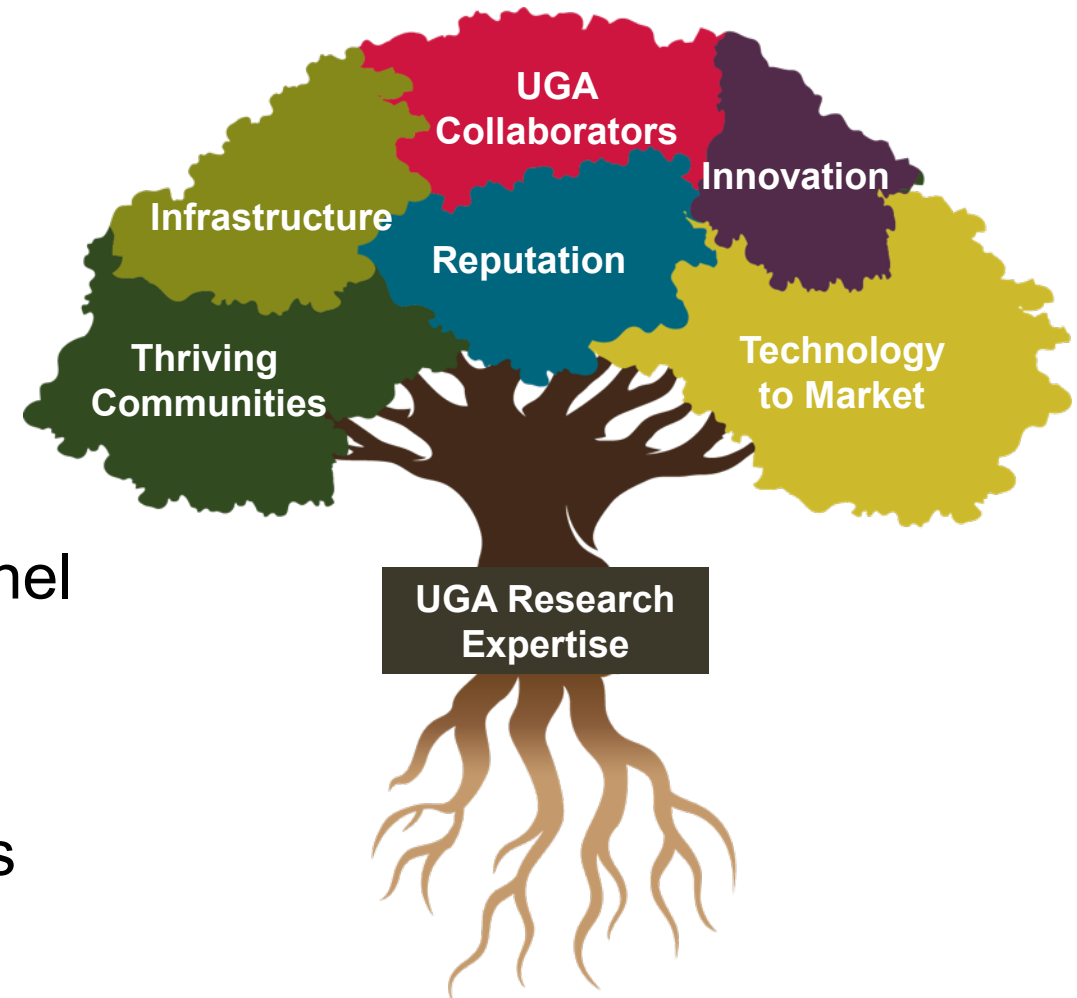
**Office of Research is**

***Enabling Discovery to Build  
a Better World***



# How do we encourage and support research?

- Seed grants
- Team building
- Proposal development & submission
- Partnerships & initiatives
- Facilities, technology & resources
- Honors & recognition
- Safety & advocacy for research personnel
- Legal & ethical compliance
- Intellectual property & new ventures
- Communicate UGA research successes



# How We Encourage

18 interdisciplinary research centers,  
institutes & initiatives.

<https://research.uga.edu/centers-institutes/>

Three examples:

- Owens Institute for Behavioral Research
- Willson Center for Humanities & Arts
- Complex Carbohydrate Research Center

Jody Clay-Warner  
OIBR



Nicholas Allen  
Willson Center



Michael Tiemeyer  
CCRC





# How We Encourage Internal Grant programs

<https://research.uga.edu/iga/grants/>

- Faculty Research Grants
  - Seed grants in sciences & engineering
  - Arts & Humanities (Willson Center)
  - “Grants on the Edge/within Reach”
- Research Team Support
  - Team Formation & Development
  - Pre-Seed & Presidential Interdisciplinary Seed Grants
  - Large Team Leadership Training
  - Major Integrative Proposal Support



Larry Hornak  
Integrative Team  
Initiatives



Interdisciplinary STEM Writing Team



Interdisciplinary Team for Aquaponics



Secure and Privacy-Sensitive Data Science for Enabling Resilient Communities



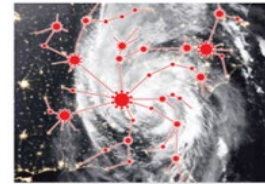
Coastal Resilient Housing



Combining terrestrial and aquatic perspectives to advance our understanding of ecosystems



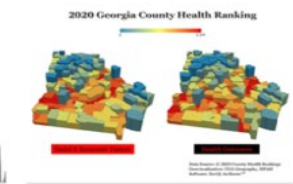
Cyber-Physical-Social Convergence Team



Disasters Colliding: The Epidemiology of Severe Weather Events



Integrated Approaches to Address Current and Future High Consequence Biological Agents



Interdisciplinary Approaches to Social Determinants of Health Research



Systems Approach for Sustainable Strategies to Prevent Chronic Disease



The UGA HOST Research Initiative



UGA Innovation, Creativity, and Design Thinking Research Community

# How We Support

## Proposal Development, Mission Agency Relationships



**Jake Maas**  
Proposal Enhancement



**Larry Hornak**  
UGARI, Defense &  
Security Collaborations

- Office for Proposal Enhancement
  - Large, complex proposal development
  - Resubmission strategy & narrative editing
  - Grantsmanship training
- UGA Research Institute (UGARI), Office of Defense & Security Collaborations
  - Facilitates Defense, Energy, and Mission Agency relationships
  - Support faculty in mission-driven research and its special needs—proposal through execution





# How We Support



**Eric Ferreira**  
Interim Associate  
Vice President for  
Facilities &  
Infrastructure

## Core Facilities

- Instrument Design & Fabrication
- Center for Applied Isotope Studies Analytical Services
- Georgia Electron Microscopy

<https://research.uga.edu/core-facilities/>

## Unique Facilities

- UGA Marine Institute
- Skidaway Institute of Oceanography
- Savannah River Ecology Laboratory (SREL)
- UGA-Tifton and Griffin



**Carl Bergman**  
Special Advisor:  
Research Core  
Facilities

## Core Facilities & Research Services

University of Georgia Core Facilities provide state-of-the-art equipment and services to researchers at UGA, other universities, government agencies, nonprofit organizations and industry. These facilities make use of highly specialized scientific equipment, diagnostic tools, adaptable prototyping processes and mechanical production shops.



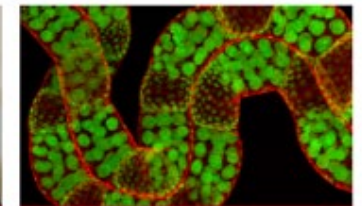
Animal Health Research Center



Bioexpression & Fermentation Facility



Bio-Imaging Research Center



Biomedical Microscopy Core



CCRC Analytical Services



Center for Applied Isotope Studies



Center for Drug Discovery



Clinical & Translational Research Unit





# How We Support

## Innovation Gateway

<https://research.uga.edu/gateway>

Assists faculty & students with:

- Intellectual property protection & licensing
- NSF I-Corps, Accelerator
- Programming for aspiring innovators
- Startup incubator space
- Growing Innovation District

*Campus Partner:*

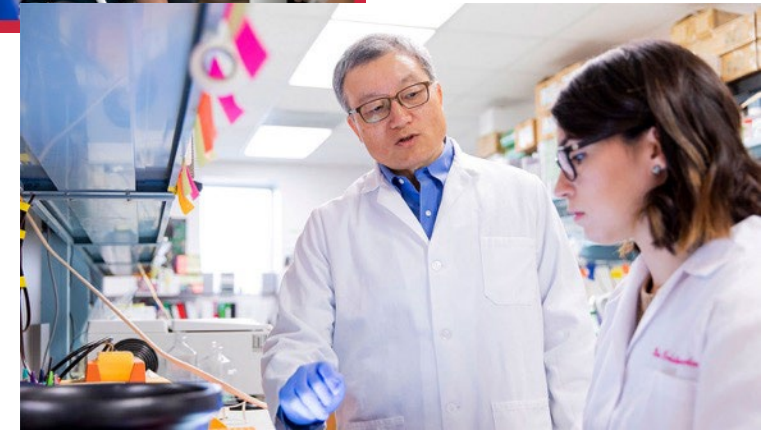
Office of Business Engagement

<https://dar.uga.edu/business-engagement>

- Facilitates partnerships with industry



Derek Eberhart  
Entrepreneurship &  
Technology Transfer



# We Help to Assure Research with Integrity

The Office of Research Integrity & Safety (ORIS) supports studies with:

- *Human subjects (IRB)*
- *Animal subjects (IACUC)*
- *Biohazardous agents (IBC)*

ORIS also supports:

- *Export control*
- *Research security*
- *Research/lab safety*
- *Occupational health*
- *Research misconduct*
- *NAGPRA*



**Chris King**  
Research Integrity  
& Safety

<https://research.uga.edu/integrity>



# How We Support



Jill Tincher,  
Sponsored Projects

## Sponsored Projects <https://spa.uga.edu>

- Proposal review & submission
- Award receipt, negotiation & account set-up
- Financial management: invoicing, reporting & compliance
- Find funding
  - Pivot database:  
<https://guides.libs.uga.edu/grants/pivot>



Jessica Farmer,  
Research Personnel

## Personnel

- Postdocs
- Visiting scholars
- Research scientists

<https://research.uga.edu/personnel/>





# Sponsored Projects

Jill Tincher, Executive Director, Sponsored Projects Administration

*August 9, 2024*







# What are Sponsored Projects?

(externally funded)



**RESEARCH**



**INSTRUCTION**



**COOPERATIVE  
EXTENSION**



**AGRICULTURAL  
EXPERIMENT  
STATION**



**OTHER SPONSORED  
ACTIVITIES**



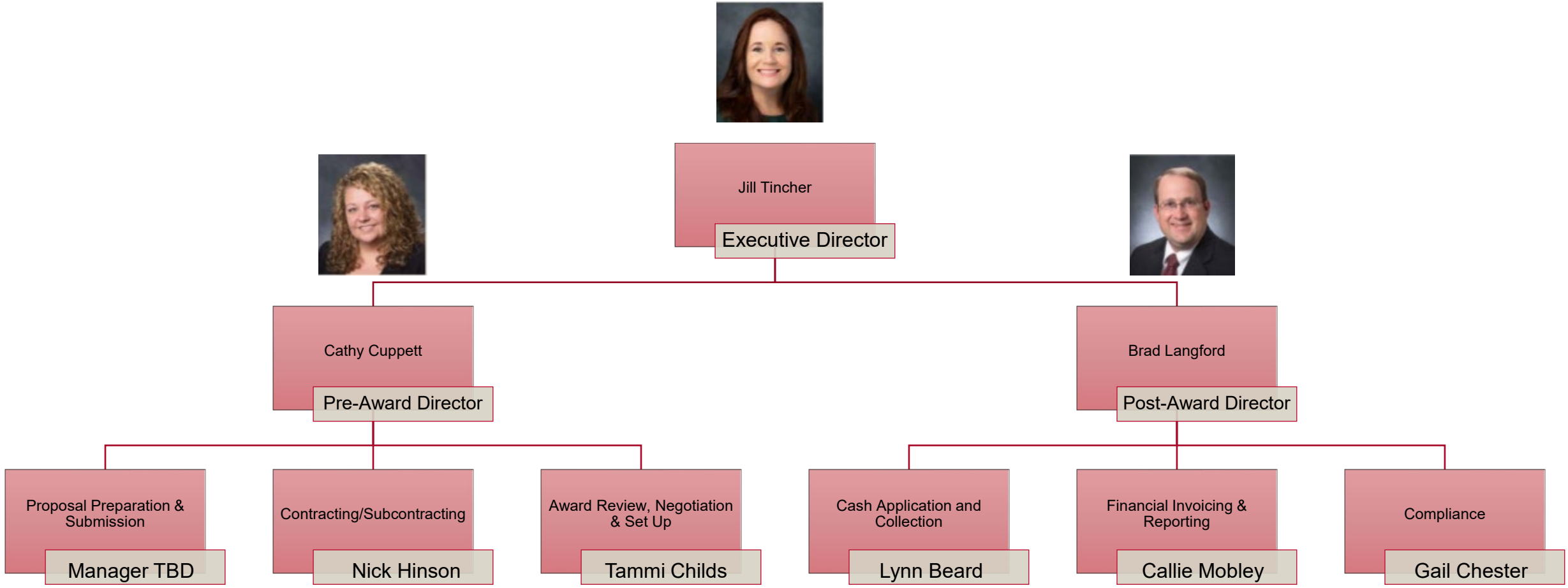
**PUBLIC SERVICE**







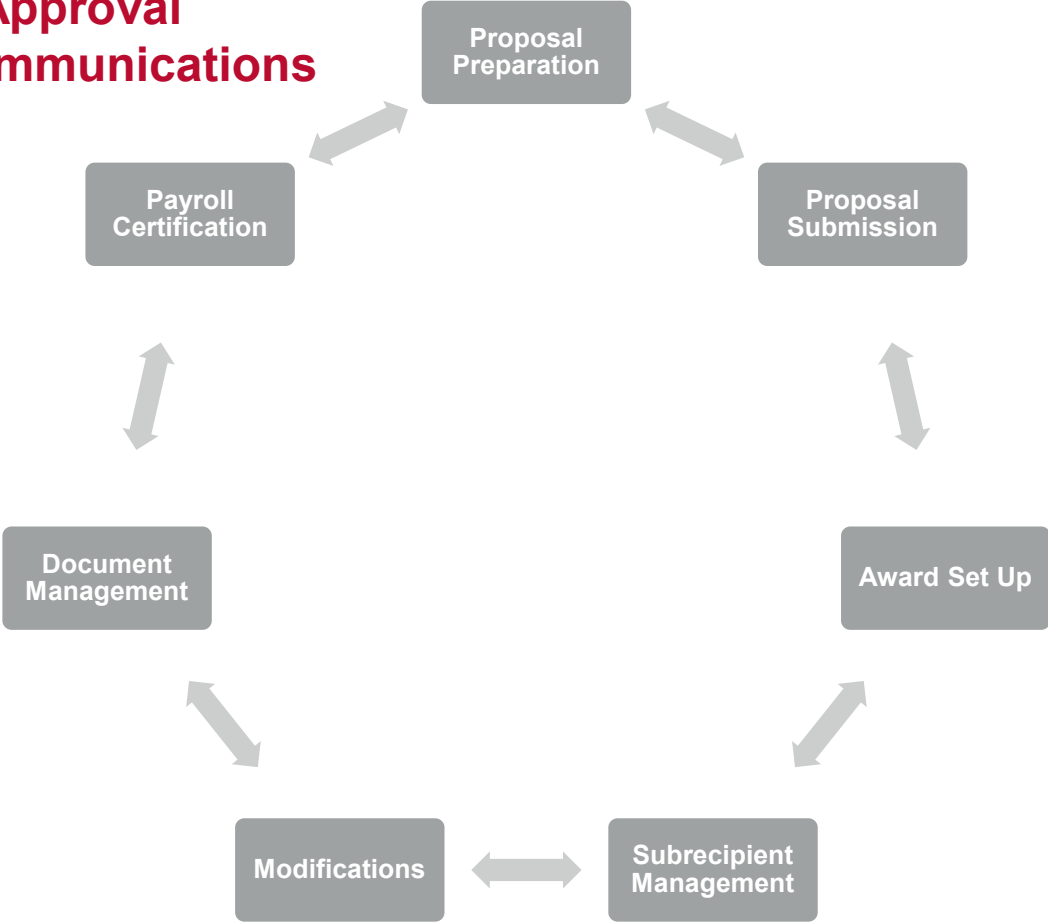
# Sponsored Projects Administration



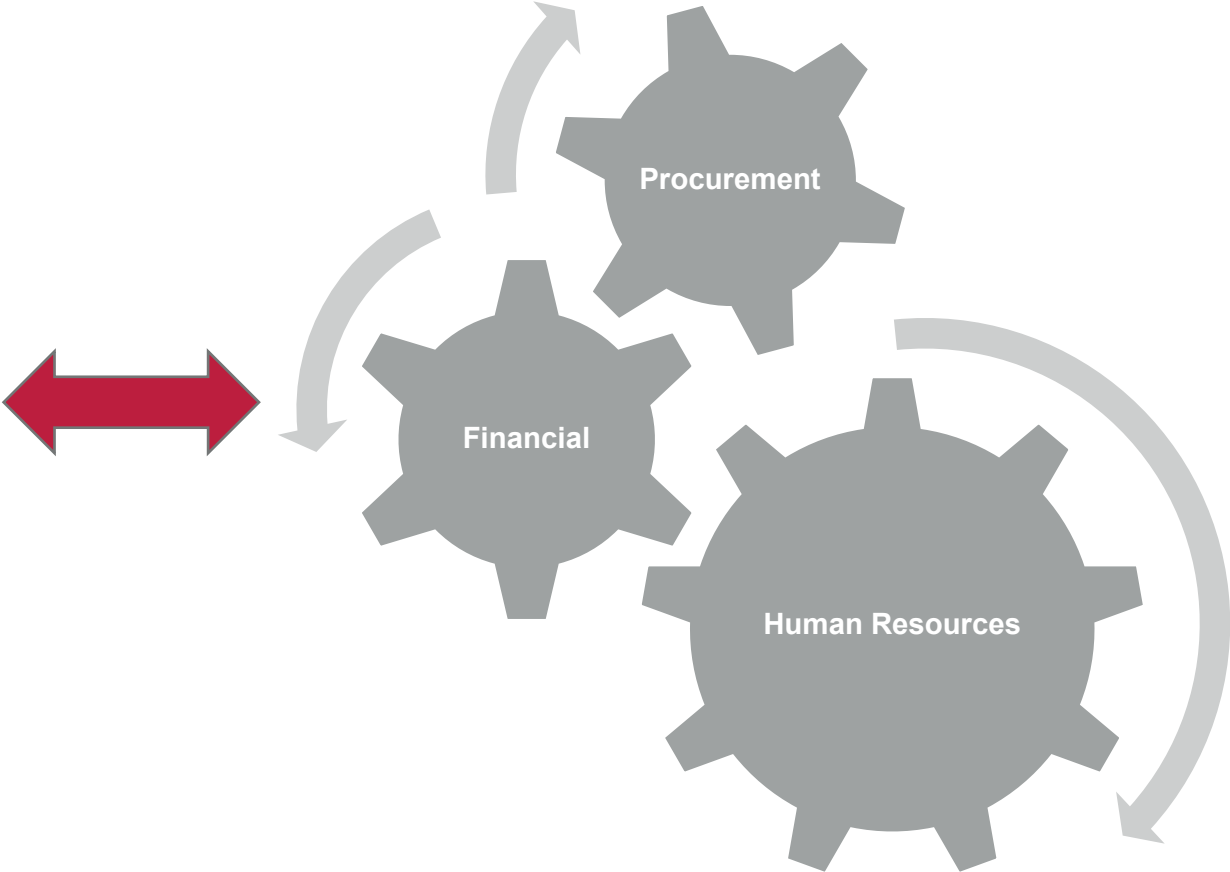
# UGA SPA-Related Systems

- Workflow
- E-Routing
- E-Approval
- Communications

## Grants Portal



## Financial Management System





# Resources



**Unit and Central Administrators**



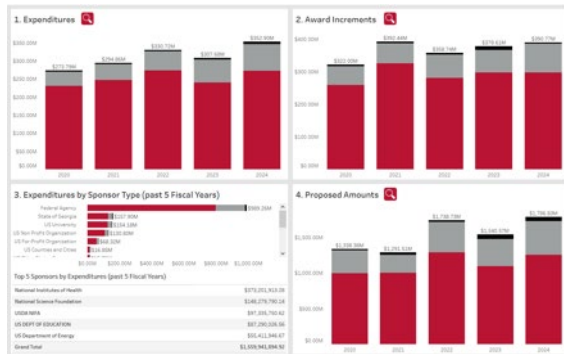
**Delegated Limited Signature Authority**



**In-Person and Virtual Training**



**Robust Website**  
[www.spa.uga.edu](http://www.spa.uga.edu)



PSR Lite  
 Project: RNIHX0001248701 - Capturing the genomic variatio  
 Date Range: 8/20/2020 - 7/31/2025  
 Project Manager: Kissinger, Jessica (1802824)

PM Name: Kissinger, Jessica (1802824) | Project ID Descr: RNIHX0001248701 - Capturin... | Project Activity ID Descr: A00 - Capturing the genomic v...

**Account Summary**

Proj Budget Type	Account Level 2	Budget Amount	Encumbrance Amount	Actual Amount	Balance
Over the Cap	Personal Services Expense	\$28,290.28	\$0.00	\$20,741.99	\$7,548.29
	<b>Subtotal</b>	<b>\$28,290.28</b>	<b>\$0.00</b>	<b>\$20,741.99</b>	<b>\$7,548.29</b>
Sponsor Funded	Personal Services Expense	\$802,188.00	\$115,330.32	\$469,719.60	\$217,138.08
	Travel	\$24,300.00	\$0.00	\$19,038.34	\$5,261.66
	Op Supplies & Expenses	\$396,482.00	\$43,413.34	\$363,139.10	(\$10,070.44)
	Equip/Capital Outlay	\$28,237.00	\$0.00	\$26,894.40	\$1,342.60
	<b>Subtotal</b>	<b>\$1,251,207.00</b>	<b>\$158,743.66</b>	<b>\$878,791.44</b>	<b>\$213,671.90</b>

## Sponsored Projects Reporting

# How Can SPA Help You?



# Proposal Enhancement

Jake Maas, Director

*August 9, 2024*





# Office for Proposal Enhancement

<https://research.uga.edu/proposal-enhancement>



Jake Maas

Director

Rebecca Kirkland

Proposal Development Officer

Rachel Ankirskiy

Research Development Professional



# Proposal Development Support

- Large, complex proposals (3+ months' lead time)
- Proposals with broad institutional benefit: instrumentation, training grants, DEIA, IE
- Resubmissions
- Smaller proposals as we have time and capacity





## Over 7.5 Years OPE has:

- Worked on **550+** proposals potentially worth over **\$1.7B**
  - Average proposal amount over **\$3M**
- Helped bring in over **\$230M** in extramural funding
- Conducted grantsmanship events involving **2000+** faculty, postdocs, and grad students





# Project Management Services

- Project Management (timeline/checklist for all proposal parts, schedule and coordinate meetings, etc.)
- Provide strategic advice on making proposal competitive
- Connect investigators with UGA resources, offices, units
- Coordinate collaborating institutions for a proposal
- Assist with sponsor communications
- Coordinate with SPA/DLSA

- Provide outlines for narratives and ancillary components
- Write sections as appropriate (e.g., resources, management, timeline, communications, outreach, DEIA)
- Develop/review ancillary documents (biosketches, facilities, collab letters, etc.)
- Edit proposal drafts
- Coordinate institutional support requests
- Manage “Red Team” review
- Assist with post-submission revisions



## **Other Proposal-Specific Services (4+ weeks' lead time)**

### **Resubmissions**

- Analyze proposal reviews
- Talk through reviews with investigators
- Develop “resubmission strategy” in consultation with investigators
- Provide feedback/editing on resubmission

### **Proposal Editing (as capacity permits)**

- Conformity with solicitation
- Effectiveness of argument for funding
- Organization, clarity, flow
- Word choice, grammar, spelling



# General Proposal Support

- Newsletters/Listserv announcements of funding opportunities
  - Large Grants/Limited Submissions [weekly email](#)
  - Monthly Grants sections in [Research Insights](#)
- Share successful proposals (with PI permission)
- [Maintain up-to-date boilerplate](#) for core facilities, centers/institutes, broadening participation, other institutional commitments
- [Provide templates](#) for most documents
- Assist faculty in navigating through administrative structures within UGA
  - Coordinate with SPA/DLSAs/Grant Coordinators





## Grantsmanship/Outreach

- General and bespoke workshops, webinars, and presentations
- Departmental/unit outreach
- External speakers, info sessions, and workshops
- Panel Discussions
- Peer Review for NSF CAREER program
- Subscribe to our Youtube channel:

<https://www.youtube.com/channel/UCCDpdKr6tPBP66UOciwqDyQ>



# Impact of your Research, Scholarship and Creativity

**#1 IN THE NATION**  
**FOR NEW PRODUCTS TO MARKET**  
*ON AUTM'S LIST OF U.S. COLLEGES & UNIVERSITIES*

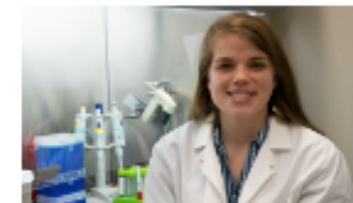
- ~1,200 products to date
- Vaccines, pharmaceuticals, turfgrass, peanuts, software, etc.



**AWARDS & HONORS**  
Fagbami named 2022 Burroughs Wellcome Fund PDEP Fellow



**HUMANITIES & ARTS**  
Jamie Kreiner and the quiet forces of history



**INFECTIOUS DISEASE**  
Increasing the knowledge base on brain-eating amoeba



**ANTHROPOLOGY**  
UGA study asks: Did democracy have a separate origin in the Americas?

# UGA Discovery → Impact: Technology Transfer



**1200+**  
**Products**  
Introduced to the  
Marketplace



**Top 10**  
Licenses/Options with  
Industry among US  
Universities



**60 Products**  
Reached the Market in  
FY2022



# UGA Discovery → Impact: Startups



**250+ Startups**

Launched Based on  
UGA Research



**\$531 Million**

Annual Economic Impact from  
Research-Based Startups



**Top 15**

For Active Startups among U.S.  
Public Universities

# How We Support Recognition for your Research Achievements

## Internal Research Honors

<https://research.uga.edu/iga/awards>

- Nomination through Deans, Center/Institute Directors
- All Career Stages
- New Awards:
  - Team Impact
  - Non-Tenure Track Faculty Excellence
  - Research Communications
- Inventor and Entrepreneur Awards
- Postdocs and graduate students



**Chris King**  
Internal Faculty  
Honors



**Jessica Farmer,**  
Research Personnel



Team CENHTRO  
Team Impact Award



James Naigus  
Early Career Scholar



Michael J. Chamberlain  
Research Communications Award



Juliet Sekandi  
Creative Research Medal



Soraya Leal-Bertioli  
Non-Tenure Track Faculty Award

# Stay Connected - Office of Research Channels

## Publications/Series

- Research Insights
- Research Live
- RCCR newsletter
- @UGAResearch website
- @UGAResearch newsletter
- Innovation Gateway newsletter
- Willson Center newsletter



Mike Terrazas  
Research  
Communications

## Listservs

- VPR research faculty
- Large grants & limited submissions
- Postdocs
- Research Personnel

<https://research.uga.edu/communications/guide-to-research-media/>

<https://research.uga.edu/start-your-research-program>

**Large Grant Opportunities & Limited Submissions**

Office of Research  
UNIVERSITY OF GEORGIA

**Large Grant Opportunities**

**CDC: Enhancing Global Health Security: Strengthening Public Health Surveillance**  
Deadline: August 09, 2021  
Amount: \$60,000,000  
Brief Description: Activities under this Notice of Funding Opportunity include: 1) strengthening public health surveillance; 2) improving the interface between public health disease surveillance and public health action. This NOFO is intended to support the implementation of surveillance activities that focus on protocol development, strengthening surveillance capacities and systems that...

**Limited Submissions**

Limited submissions are funding opportunities in which the submitter is invited to submit. Office of Research reviews internal applications for chance of being funded by the sponsor. If you are interested in submitting an application through UGA InfoReady, contact [lrmsub@uga.edu](mailto:lrmsub@uga.edu).

**NIH: Institutional Research and Academic Career Development**  
The Institutional Research and Academic Career Development program provides postdoctoral research experience at a research-intensive institution and mentoring skills at a teaching-intensive partner institution.

**NSF: Inclusion across the Nation of Communities of Learners of All Ages and Abilities (NSF INCLUDES)**  
The NSF INCLUDES Big Idea is a comprehensive national initiative to increase participation in STEM discoveries and innovations focus on participation in these fields. NSF INCLUDES seeks to improve the participation, and ensuring the contributions of individuals from underserved populations such as African American, Native Pacific Islanders, persons with disabilities, persons from...

**View All UGA Limited Submission Opportunities ->**

UNIVERSITY OF GEORGIA  
Office of Research

July 2024

**Research Insights**

A monthly publication of the UGA Office of Research with the latest funding opportunities and announcements in support of our research community.

Curious about this image?  
Scroll to the bottom of the email to find out what it is.

### In this Email

- Grant Opportunities
- Humanities & Arts Opportunities
- Foundation Opportunities
- Team Science

UNIVERSITY OF GEORGIA  
1785

**Willson Center for Humanities & Arts**  
UNIVERSITY OF GEORGIA

FORD FOUNDATION

JustFilms



Ford Foundation offers year-round grants for film and new media projects exploring inequality





# Who to contact in the Office of Research?



**Chris King**

Research Integrity and Safety; Research Security & Export Control,  
Internal Grants, Research Personnel



**Jake Maas**

Proposal Enhancement



**Jill Tincher**

Sponsored Projects



**Mike Terrazas**

Research Communications



**Larry Hornak**

Integrative Team Initiatives, Limited Submissions,  
Defense & Security Collaborations



**Eric Ferreira**

Research Facilities &  
Infrastructure



**Derek Eberhart**

Entrepreneurship & Technology Transfer



**Carl Bergman**

Research Core Facilities

# We're here to help!

Toolkit to jumpstart your research

- <https://research.uga.edu/start-your-research-program>

Research Open House this fall

- Details coming soon

Not sure who to ask?

- [ovpr@uga.edu](mailto:ovpr@uga.edu) or 706-542-5969

We want to hear from you

- Share your feedback

UNIVERSITY OF GEORGIA

Directory Forms & Policies Calendar Research News

UNIVERSITY OF GEORGIA  
Office of Research

Feedback Support Research

About For Researchers For Industry

## Start Your Research Program

Navigating the research opportunities and support services at a new university can be overwhelming, and the UGA Office of Research is here to help. The links below will guide you through the steps to get your research program started, as well as stay on top of the latest news about and for UGA faculty researchers.

Contact [ovpr@uga.edu](mailto:ovpr@uga.edu) if you have questions getting started.

Watch recorded video of the Fall 2024 Faculty Research Orientation

### Starting Your Lab

- ① Renovating laboratory space
- ① Opening a research laboratory
- ① Procuring of research equipment and supplies
- ① Accessing shared-use core research facilities

### Additional Information

- ① Getting started at UGA
- ① Obtaining graduate faculty status to advise students
- ① Pinpointing international research resources
- ① Marketing for and recruiting researchers
- ① Budgeting for researchers

### Funding Your Work

- ① Finding internal funding opportunities
- ① Finding external funding opportunities
- ① Finding new venture funding opportunities
- ① Finding a collaborator / consultant
- ① Building a team
- ① Writing proposals
- ① Building budgets
- ① Submitting proposals
- ① Identifying roles and responsibilities

### Investigator Responsibilities

**Thank you!**

**Questions for our Team?**